



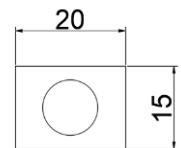
ONDA-NS149

Specification sheet

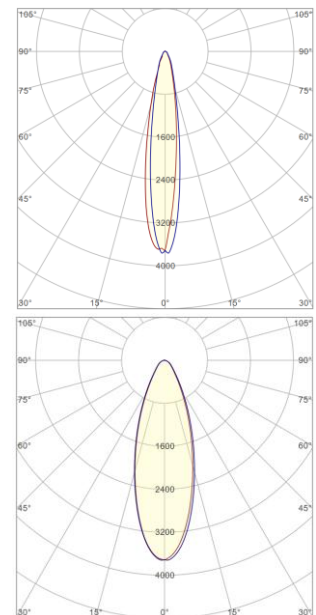
Indoor | Outdoor



Dimension	H15mm x W20mm×L5000mm
PCB Increment	250mm
LED/m	24
Chip	3535(15°) / 3030(25°30°45°60°)
Cover/Optics	15° / 25° / 30° / 45° / 60°
Bend type	Dual-Bend
CCT	2700K / 3000K / 3500K / 4000K / 5000K / 6000K
Bin	3-Step MacAdam Ellipse
CRI	90
Lifetime	50,000 hours @ 65°C
Operating Temp.	Ta = -20 to 45°C (Tc max<65°C)
IP Rating	IP67
Mounting	Clips / Tape / Bracket / Aluminum channel
Power feed	Rear Feed / Bottom Feed (left & right side)
Control	0-10V / 1-10V / DMX / DALI
Certification	CE
Warranty	5 Years
Weight	0.56kg/m
Max run	5m



Unit: mm



PRODUCT DATA @ 3000K

Power Consumption	18W/m
Supply voltage	24V DC
Lumen/m	1836lm/m
Lumen/W	102lm/W

PERFORMANCE DATA @3000K

R1	R2	R3	R4	R5	R6	R7	R8	R9	R10	R11	R12	R13	R14
92	96	98	90	91	93	93	83	60	89	90	70	93	98



ONDA-NS149

Length Availability List

Indoor | Outdoor



Length Code	Fixture Length (mm) ¹	LED Strip (mm) ²	End Cap Dimension (mm) ³
m0053	53	50	3
m0103	103	100	3
m0153	153	150	3
m0203	203	200	3
m0253	253	250	3
m0303	303	300	3
m0353	353	350	3
m0403	403	400	3
m0453	453	450	3
m0503	503	500	3
m0553	553	550	3
m0603	603	600	3
m0653	653	650	3
m0703	703	700	3
m0753	753	750	3
m0803	803	800	3
m0853	853	850	3
m0903	903	900	3
m0953	953	950	3
m1003	1003	1000	3
m1053	1053	1050	3
m1103	1103	1100	3
m1153	1153	1150	3
m1203	1203	1200	3
m1253	1253	1250	3



ONDA-NS149

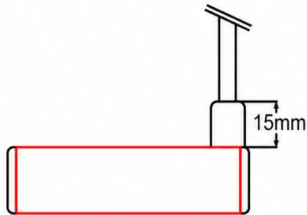
Cable exit & Accessory

Indoor | Outdoor



DIMENSIONS VARY BY CABLE EXIT TYPE

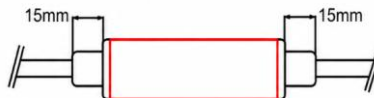
Rear / Side cable exit



End cable exit



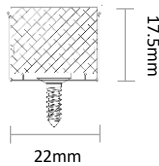
Single end



Double end

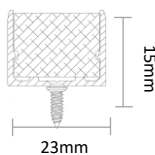
MOUNTING ACCESSORIES

Note: Accessories are to be ordered separately with corresponding code shown below.

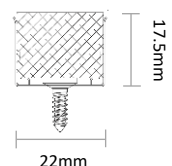


Clip

- Silver color is standard
- Allow 6 per metre



Aluminum Channel



Bendable Channel