



ONDA-NS182

Specification sheet

Indoor | Outdoor



L70 B10
> 50000h



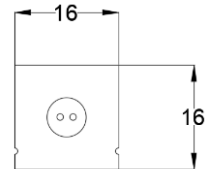
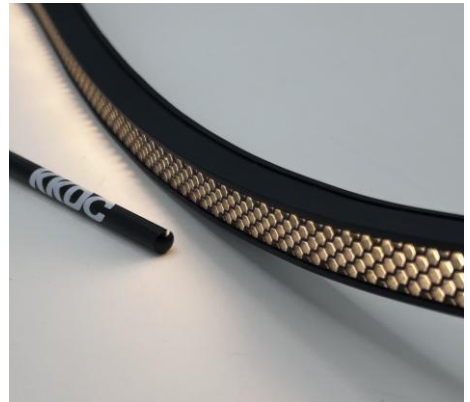
RoHS
Compliant

LM79
Tested

LM80
Tested

TM-30
Results

Dimension	H16mm x W16mm x L5000mm(Max)
PCB Increment	Free-Cutting to be any length
LED/m	120
Chip	2835
Cover/Optics	50°
Bend type	Dual-bend
CCT	2700K / 3000K / 3500K / 4000K /5000K / 6000K
Bin	3-Step MacAdam Ellipse
CRI	90
TM 30-15 R_q	R _g =99
TM 30-15 R_f	R _f =89
Lifetime	50,000 hours @ 65°C
Operating Temp.	T _a = -20 to 45°C (T _c max < 65°C)
IP Rating	IP67
Mounting	Clips / Tape / Bracket / Aluminum channel
Power feed	Rear Feed/ Bottom Feed (left & right side)
Control	0-10V / 1-10V / DMX / DALI
Certification	CE
Warranty	5 Years
Weight	0.24kg/m
Max run	5m

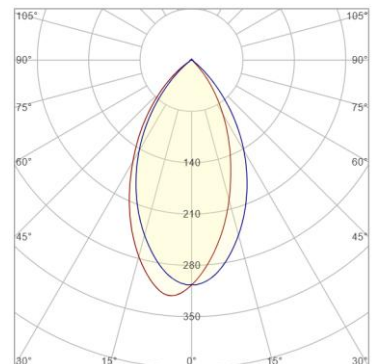


Unit: mm

PRODUCT DATA

@ 3000K

Power Consumption	14W/m
Supply voltage	24V DC
Lumen/m	170lm/m
Lumen/W	12lm/W



PERFORMANCE DATA

@3000K

R1	R2	R3	R4	R5	R6	R7	R8	R9	R10	R11	R12	R13	R14
92	94	94	92	91	91	93	86	59	85	92	67	93	96



ONDA-NS182

Length Availability List

Indoor | Outdoor



Length Code	Fixture Length (mm) ¹	LED Strip (mm) ²	End Cap Dimension (mm) ³
m0053	53	50	3
m0103	103	100	3
m0153	153	150	3
m0203	203	200	3
m0253	253	250	3
m0303	303	300	3
m0353	353	350	3
m0403	403	400	3
m0453	453	450	3
m0503	503	500	3
m0553	553	550	3
m0603	603	600	3
m0653	653	650	3
m0703	703	700	3
m0753	753	750	3
m0803	803	800	3
m0853	853	850	3
m0903	903	900	3
m0953	953	950	3
m1003	1003	1000	3
m1053	1053	1050	3
m1103	1103	1100	3
m1153	1153	1150	3
m1203	1203	1200	3
m1253	1253	1250	3



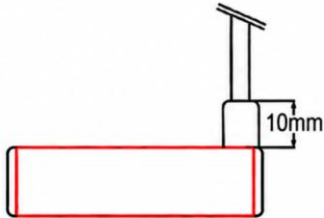
ONDA-NS182

Indoor | Outdoor



DIMENSIONS VARY BY CABLE EXIT TYPE

Rear / Side cable exit



End cable exit



Single end



Double end

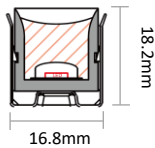
MOUNTING ACCESSORIES

Note: Accessories are to be ordered separately with corresponding code shown below.

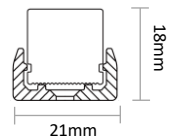


Clip

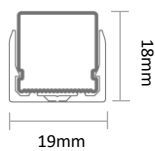
- Allow 6 per metre



Clip



Aluminum Channel



Bendable Channel

